

## Enterprise Software

Enterprise by Point-of-Rental™ Systems is a new generation of rental management software that advances the state of the art. With Internet integration, graphic image storage, faster processing and the simplicity of the Microsoft Windows® user interface, Enterprise is an industry breakthrough.

By using the Microsoft Windows® Server operating system and building upon our legacy software design introduced in 1984, Enterprise jumps forward with cutting edge features of which only programmers rooted in the rental industry could conceive. This feature rich package provides top-notch design and function yet maintains the reliability for which Point-of-Rental™ Systems are famous.

Widely recognized as the best in rental management software by reputation, Point-of-Rental™ Systems has replaced competitor systems in nearly 500 rental stores! Available in multi-store, multi-user and single user configurations.

Call to request a demonstration...then, watch it exceed your expectations!



**POINT-of-  
RENTAL™  
Systems**

**POINT-of-  
RENTAL™  
Systems**

1901 N State Highway 360, Suite 340  
Grand Prairie, TX 75050

t: 800.944.7368  
p: 972.602.9819  
f: 972.602.3178

email: [info@point-of-rental.com](mailto:info@point-of-rental.com)  
[www.point-of-rental.com](http://www.point-of-rental.com)

The Leader in  
Rental Management  
Software  
for Windows®

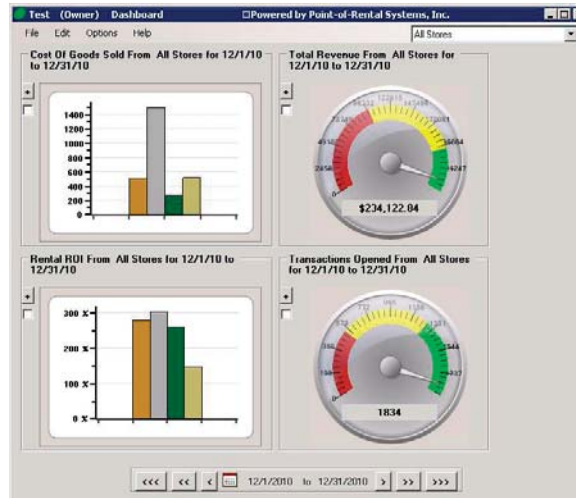


Get the Point.™

Point-of-Rental™ Systems has long been the answer to rental management needs because our programmers know the business. Soon after former software engineers opened their own rental store in 1982 they realized that many concepts they worked on at NASA could be applied to rental management. Thus, Point-of-Rental™ Systems was launched. And, the rest is history... since 1984 nearly 1,300 rental stores world-wide have come to appreciate these easy-to-use, fast, reliable and flexible systems.

Cash Customer Record

The focus is on transaction processing. Contracts, reservations, quotes, asset sales and work orders are created quickly and efficiently using the same user interface. Partial closes, partial quantity closes (scaffold), return of sale items and sales of broken items are all logically processed on the same contract. Contracts can be easily modified, cancelled and even cloned. Hour meter, diamond blade, odometer, helium and fuel readings are stored, prompted for upon return, and then automatically priced. Account customer records contain personnel authorized to rent and dunning call history. Inventory item records store preventative and remedial maintenance history for serialized inventory. Extensive transaction, income and payment history is automatically stored monthly for ten years in the transaction, customer and item records. Extensive parameters optimize the software for different environments such as party and/or



Business Intelligence

equipment rental. Parameterized security down to the field level is provided via operator ID's and passwords.

With the familiar Microsoft Windows® user interface, on screen help and a separate training database that is updated daily, new employees quickly learn the system. New features are added frequently and provided at no additional cost to those subscribing to our software subscription service. Toll free support is available at 800.944.7368.

Item Availability	Sunday	Monday	Tuesday	Wednesday	Thursday	Friday	Saturday
2/21/2010							
2/22/2010							
2/23/2010							
2/24/2010							
2/25/2010							
2/26/2010							
2/27/2010							
2/28/2010	2	2	2	2	2	2	2
2/29/2010							
3/1/2010							
3/2/2010							
3/3/2010							
3/4/2010							
3/5/2010							
3/6/2010							
3/7/2010							
3/8/2010							
3/9/2010							
3/10/2010							
3/11/2010							
3/12/2010							
3/13/2010							
3/14/2010							
3/15/2010							
3/16/2010							
3/17/2010							
3/18/2010							
3/19/2010							
3/20/2010							

Item Availability

## Feature Highlights

### Counter Ops:

- Real-time inventory control
- Contracts, Reservations, Quotes & Work Orders
- Real-time display of flow from Quote to Close
- "Back" and "Bail Out" buttons for fast Contract edits
- Item imports from PartyCAD to Quote/Reservation
- Driver license imaging and OCR character input
- Integrated credit card processing
- Print instruction/safety/inspection sheets
- Delivery maps with driving directions
- Fax, e-mail or print multi-format contracts
- Automatic delivery/pickup fees by zone
- Dispatch with TSO Mobile™ GPS Integration

### Maintenance:

- Preventative & remedial maintenance with history
- Parts importing from vendor databases
- Work orders, automatic Repair Orders for PM
- Store Manuals, Diagrams & Maint. Videos
- Job Site service module Integrated with our Dispatch Center routing module

### Backroom:

- Automatic rebilling of long-term contracts
- Integrated real-time Accounts Receivable
- Purchase Orders for rental/sale/parts inventory
- Cost of goods sold, depreciation & asset sales
- Extensive Time & Dollar Utilization & Analysis
- Integration with QuickBooks® & many others
- Fax/e-mail statements, invoices & dunning notes

### Marketing/History:

- Detailed transaction, item and customer history
- Salesman analysis & commission reports
- CRM interface to Google® Calendar & others
- Integrated web site hosting

### Support & Security:

- 24/7 Phone support and updates via subscription
- Extensive multi-level password & ID security
- PCI compliant Integrated Credit Card Processing
- On screen help; user manual; training database
- Remote terminal connection via Internet

Some modules optional and/or require Internet connectivity. © 2011